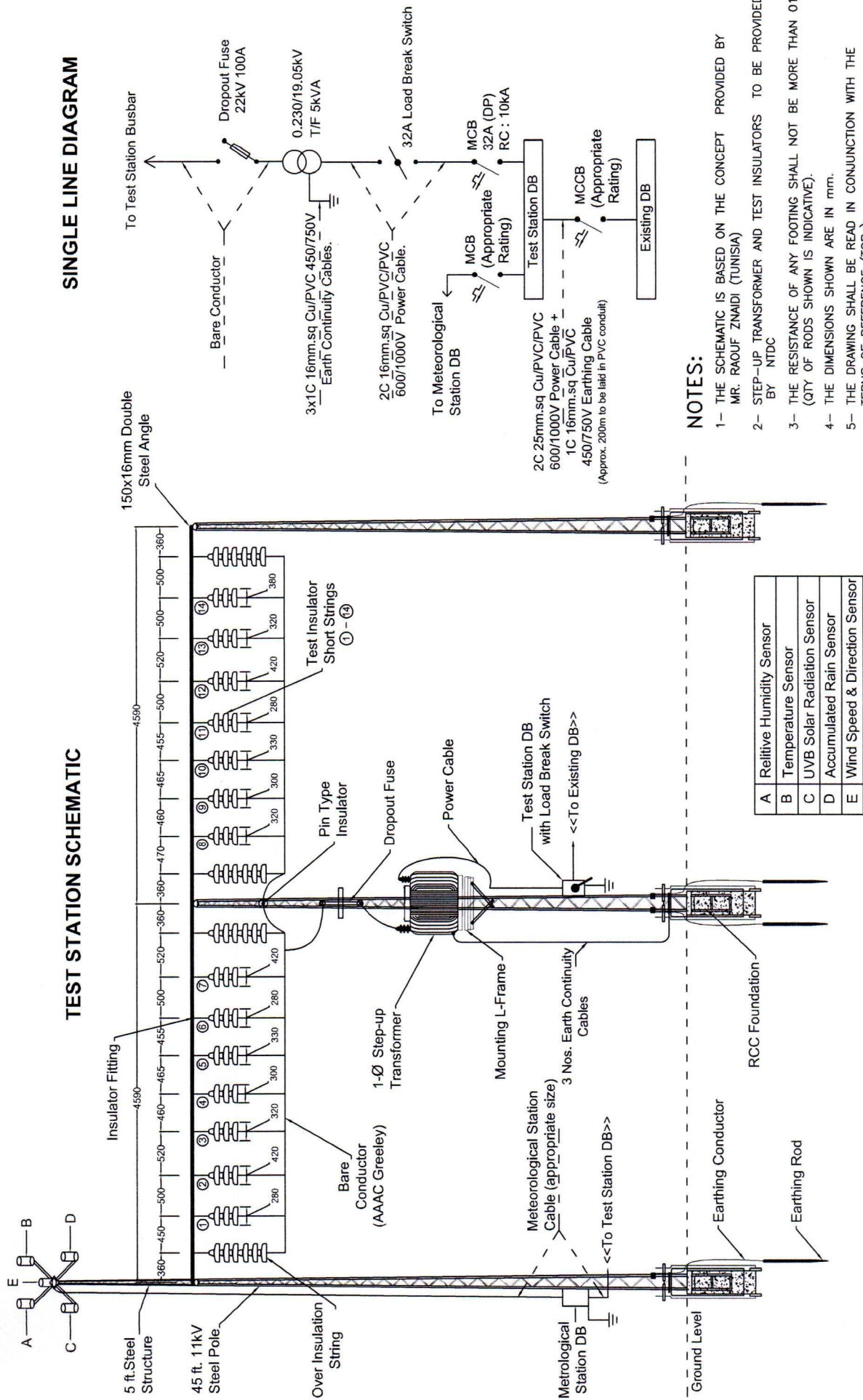
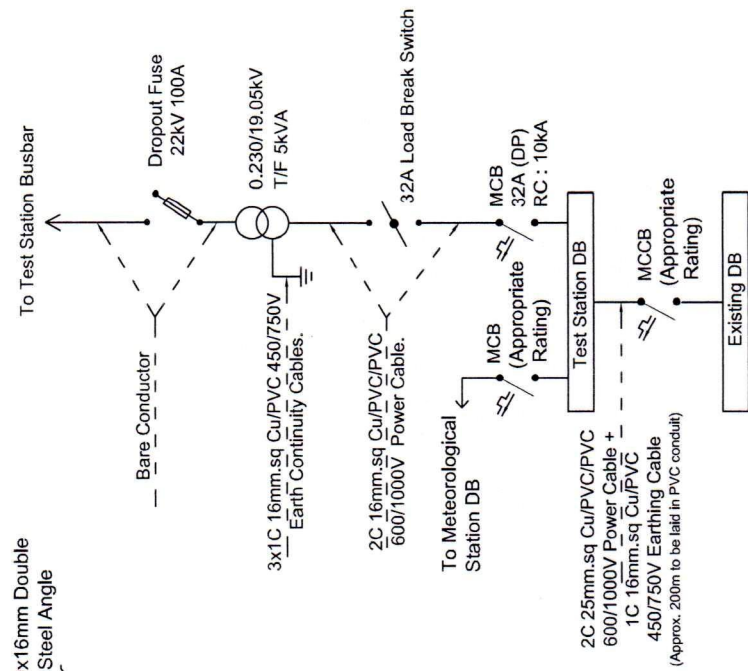


# TEST STATION SCHEMATIC



# SINGLE LINE DIAGRAM



## NOTES:

- 1- THE SCHEMATIC IS BASED ON THE CONCEPT PROVIDED BY MR. RAOUF ZNAIDI (TUNISIA)
- 2- STEP-UP TRANSFORMER AND TEST INSULATORS TO BE PROVIDED BY NTDC
- 3- THE RESISTANCE OF ANY FOOTING SHALL NOT BE MORE THAN 01 Ohm. (QTY OF RODS SHOWN IS INDICATIVE).
- 4- THE DIMENSIONS SHOWN ARE IN mm.
- 5- THE DRAWING SHALL BE READ IN CONJUNCTION WITH THE TERMS OF REFERENCE (TORs).

A	Relative Humidity Sensor
B	Temperature Sensor
C	UVB Solar Radiation Sensor
D	Accumulated Rain Sensor
E	Wind Speed & Direction Sensor

**NATIONAL TRANSMISSION & DISPATCH COMPANY LIMITED (NTDC)**

**NATIONAL ENGINEERING SERVICES PAKISTAN (PVT.) LTD.**  
POWER & MECHANICAL (P&M) DIVISION  
NEP&K HOUSE, 1<sup>ST</sup> FLOOR, PAKISTAN

**ESTABLISHMENT OF NATURALLY POLLUTED INSULATOR TEST STATIONS IN PAKISTAN**

INSULATOR TEST STATION AT 500/220KV NHI GRID STATION, KARACHI

NO	DATE	DESCRIPTION	STATUS	APPROVED	REV.
01					
02					
03					
04					

DATE	SEPT 2021	DMC. NO.	4029/169/10/01TS02
SCALE	-	REV	00